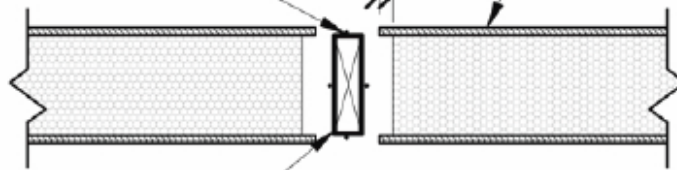


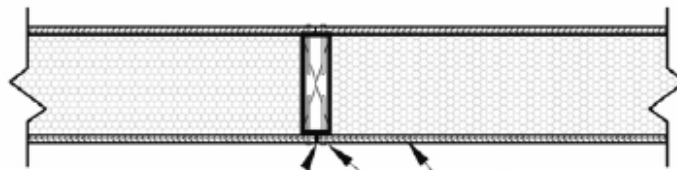
CONTINUOUS SEALANT, 4 SIDES, TYP.

3/4"

SIP PANEL



SPLINE USING 2x DIMENSIONAL LUMBER



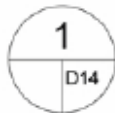
1/8" GAP, TYP..

SIP PANEL

NOTE: VAPOR RETARDER RECOMMENDED ON WARM SIDE OF PANEL IN CLIMATES WHERE RETARDERS ARE CALLED OUT BY LOCAL CODE

NAIL OR STAPLE SIP TO SPLINE WITH 8d @ 6" O.C. EACH SIDE STAGGERED
OPTION: FASTEN WITH #6 TYPE "S" DRYWALL SCREWS @ 6" O.C.

PANEL CONNECTION WITH WOOD



1" = 1'-0"

Greenix® Panels

Greener. Cleaner. Safer. Stronger

SIP SUPPLY, LLC
P. O. Box 671032
MARIETTA, GA 30066
1-770.776.6198
<http://SIPsupply.com>

This document is an instrument of service, and as such, remains the property of SIP Supply, LLC. Permission for use can be extended only by written agreement with SIP Supply, LLC.
COPYRIGHT 2003