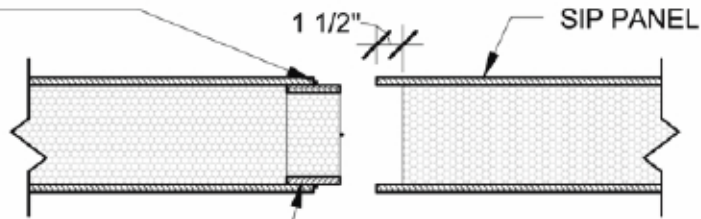
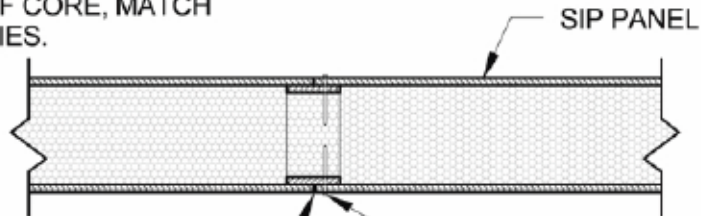


CONTINUOUS
SEALANT, 3
SIDES, TYP.



SPLINE PREINSTALLED AS TONGUE
USING 3" WIDEXSECTION OF 7/16"
OSB EACH FACE OF CORE, MATCH
SIP OSB PROPERTIES.



1/8" GAP, TYP..

NAIL OR STAPLE SIP TO SPLINE
WITH 8d @ 6" O.C. EACH SIDE
OPTION: FASTEN WITH #6 TYPE
"S" DRYWALL SCREWS @ 6" O.C.

TYPICAL TONGUE AND GROOVE CONNECTION



Greenix® Panels

Greener. Cleaner. Safer. Stronger

SIP SUPPLY, LLC
P. O. Box 671032
MARIETTA, GA 30066
1-770.776.6198
<http://SIPsupply.com>

This document is an instrument of service, and as such, remains the property of SIP Supply, LLC. Permission for use can be extended only by written agreement with SIP Supply, LLC.
COPYRIGHT 2003