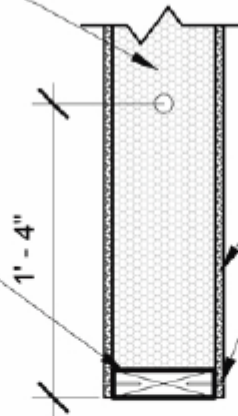


1" FACTORY
INSTALLED
ELECTRICAL CHASE
VERIFY LOCATIONS
WITH ARCHITECT

INSTALL SEALANT
BEADS EACH SIDE
AND TOP PRIOR
TO CONNECTION

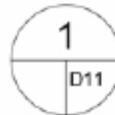


SIPS WALL

2x NAILED/STAPLED
@ 6" O.C. BOTH SIDES
IN EACH ROUTED
PANEL END

(SECTION VIEW)

NOTE: IF BOTTOM PLATE IS
FIELD INSTALLED, SLIGHTLY
CHAMFER TOP OF BOTTOM
PLATE FOR EASE OF
CONSTRUCTION



TYP. PANEL EDGE
1" = 1'-0"

Greenix[®] Panels

Greener. Cleaner. Safer. Stronger

SIP SUPPLY, LLC
P. O. Box 671032
MARIETTA, GA 30066
1-770.776.6198
<http://SIPsupply.com>

This document is an instrument of service, and as such, remains the property of SIP Supply, LLC. Permission for use can be extended only by written agreement with SIP Supply, LLC.
COPYRIGHT 2003