

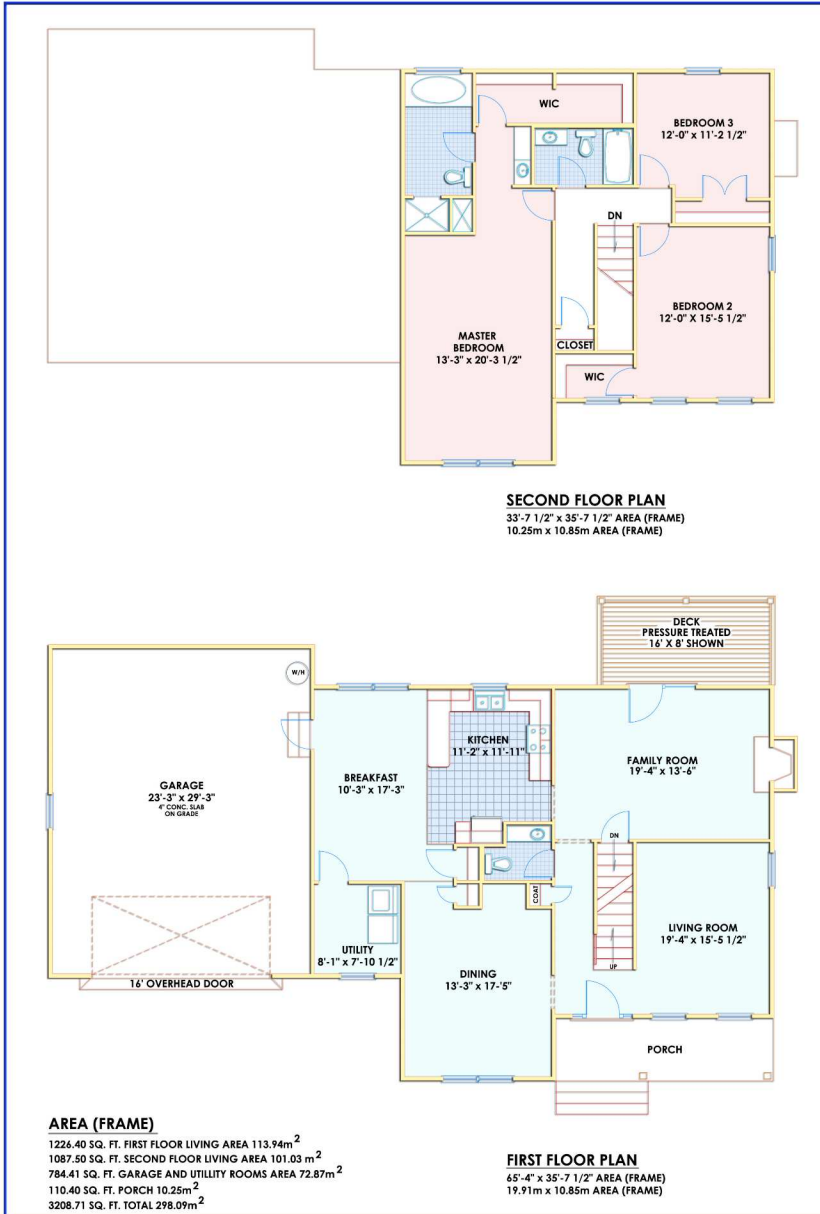
# GREENIX™ HOMES

Greener | Cleaner  
Safer | Stronger

Model: 1050-P112

## Greenix Features

- . This SIP KIT is an Exterior SIP Shell Only
- . Up to 60% Energy Savings
- . R25, R40 Insulation Values
- . Superior Strength Structure
- . Fire Resistant, Storm Resistant
- . Solid Core Exterior Walls
- . Increased Indoor Air Quality
- . Vaulted Ceilings



## Typical SIP KIT Specifications:

- . Greenix 4.5" Polyurethane SIP - R-25 Exterior Wall
- . Greenix 6.5" Polyurethane SIP - R-40 Roof
- . Pre-cut in Factory
- . Installation Manual & Panel Layout
- . Full Set of Plans to Complete Home
- . Panels Numbered and Sorted
- . SIP Screws, Foam Sealants

## "1050" Series

Greenix Model: 1050-P112

- . 3 Bedroom, Bonus Room
- . 2 1/2 Bathroom
- . 3,208 Square Feet

[www.GreenixHomes.com](http://www.GreenixHomes.com)

A SIP SUPPLY, LLC company, [www.SIPsupply.com](http://www.SIPsupply.com)

All square footage is approximate. Renderings are artists' concepts. Please refer to quote sheet for exact square footage and SIP kit specifications.